

Model CA-DXH Instructions

Wireless Door-Knock Sensor with Door Hanger

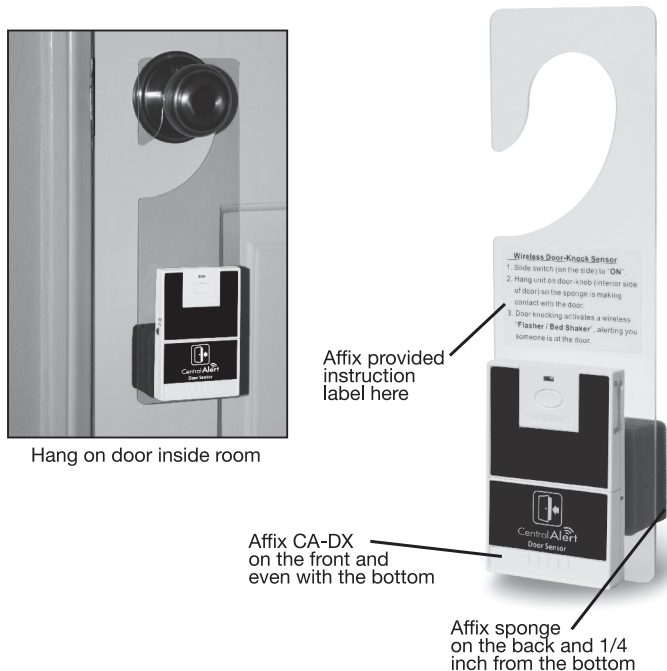
Model CA-DXH is an optional accessory for CentralAlert™ wireless notification system (for CA-360 or CA-RX). User simply hangs the unit on a door knob. It is very sensitive; any door knocking or the turning of the knob can trigger the unit.

This unit is ideal for hotel kit or dormitory use where a temporary installation is needed.

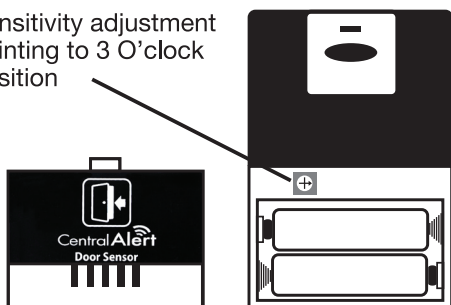
1. CA-DXH Assembly Instruction

1. Remove protective films (blue or other color) from door-hanger plastic
2. Affix CA-DX on the front of plastic (even with the bottom edge) with two 1"x1" foam tape.
3. Affix grey color sponge on the back side of door-hanger plastic (1/4 inch from the bottom edge). Its purpose is to protect CD-DXH against door slamming.
4. Affix provided instruction sheet on the plastic (place slightly above CA-DX).
5. Install battery in CA-DX and turn on unit. Confirm sensitivity adjustment (on lower corner of the circuit board) is pointing toward 3 O'clock position (Note: maximum sensitivity is pointing at 4 O'clock).

Note: CA-DX may be registered with a CA-360, CA-360H or CA-RX remote receiver).



Sensitivity adjustment pointing to 3 O'clock position



2. Registering Model CA-DXH:

Model CA-DXH must be learned by a Master-Unit (CA-360 or CA-360H) in order to work with the system.

1. Press and hold the "SOS" button on the Master-Unit for about 5 seconds to set it into a learn mode. Digital display shows "LEA".
2. Press and hold the "TEST" button on Model CA-DXH for about 8 seconds until the Master-Unit beeps twice.
3. Registration is now completed. Press "RESET" button on Master-Unit to end the learn mode.

3. Installation:

1. Hang the unit on the door knob and turn on its power.
2. Test the sensor by knocking on the door.
3. Verify CA-DXH transmit indicator blinks while CentralAlert CA-360 responds accordingly.

4. Specifications

1. Operating frequency: 2.4 Ghz
2. Operating range: Up to 200 ft, open space
3. Battery type: Two AA size alkaline (user provided)
4. Battery life: up to 10 months
5. Operating temperature: +10 to +30°C
6. Size: 2.5" x 3.8" x 1" Wt: 4 Oz
7. Spec is subject to change

5. FCC Rules Information

This device complies with Part 15 of the FCC rules. Operation is subject to the following two conditions: (1) this device may not cause harmful interference, and (2) this device must accept any interference received, including interference that may cause undesired operation. This equipment has been tested and found to comply with the limits of a Class B digital device, pursuant to Part 15 of FCC rules. These limits are designed to provide reasonable protection against harmful interference in residential installation. This equipment generates, uses, and can radiate radio frequency energy and, if not installed and used in accordance with the instructions, may cause harmful interference to radio communications. However, there is no guarantee that interference will not occur in a particular installation. If this equipment does cause harmful interference to radio or television reception, which can be determined by turning the equipment off and on, you may try one of the following methods to correct the interference:

1. Where it can be done safely, re-orient the receiving television or radio antenna.
 2. To the extent possible, relocate the television, radio, or other receiver, with respect to the cordless phone.
 3. Connect the cordless phone AC adapter into a different electrical outlet.
 4. Consult the dealer or an experienced radio/TV technician for help.
- Modification:** Any modification not expressly approved by the manufacturer of this device could void the user's authority to operate the device.

6. This Class B digital device complies with Canadian ICES-003

